

Local
Safeguarding
Children Board
Barking & Dagenham

Training Programme 2009 - 2010

<http://www.bardag-lscb.co.uk/>



CONTENTS

Welcome and Introduction	2-3
Recommended Learning Paths	4
Helping you decide which course is right for you	5-6
Training Passport	7-8
The Safeguarding Children E-learning Programme	9-10
Course administration	11-12
How to book onto a course	13
Itinerary of courses	14-15
Calendar of courses	16-18
Trainer Profiles	19-20
Courses	21-43
Application form	44-45

WELCOME AND INTRODUCTION

Welcome to the 2009-2010 training programme. In Barking and Dagenham we value learning highly. The LSCB wants to provide you with good quality learning opportunities, so that you develop yourself to your full potential.

Safeguarding is broader than 'child protection' as it also includes prevention. Safeguarding has been defined as:

- All agencies working with children, young people and their families taking all reasonable measures to ensure that the risks of harm to children's welfare are minimised; and
- Where there are concerns about children and young people's welfare, all agencies taking appropriate actions to address those concerns, working to agreed local policies and procedures in full partnership with other local agencies. (**Safeguarding Children (2005)**, The 2nd Joint Chief Inspectors Report on Arrangements to Safeguard Children. A broader definition can be found in **Working Together to Safeguard Children (2006)**)

Children can only be safeguarded properly if key agencies work effectively together. The Government's aim is for every child, whatever their background or their circumstances, to have the support they need to:

- Be healthy
- Stay safe
- Enjoy and achieve
- Make a positive contribution
- Achieve economic well-being

By working together we are able to work towards these outcomes.

Multi-agency training can be highly effective in promoting a common and shared understanding of roles and responsibilities of other professionals and contribute towards the development of effective inter-agency working relationships.

It is the responsibility of individual agencies to ensure that their staff are both competent and confident to carry out their child protection responsibilities.

This programme reflects current legislation, government guidance and accepted best practice. Our aim is to provide courses that are accessible to a broad and diverse workforce, enabling professionals to deliver excellent service provision to children and their families. We aim to maximize our potential for reaching the best outcomes for children and maintain the focus on a robust system for gathering and sharing information.

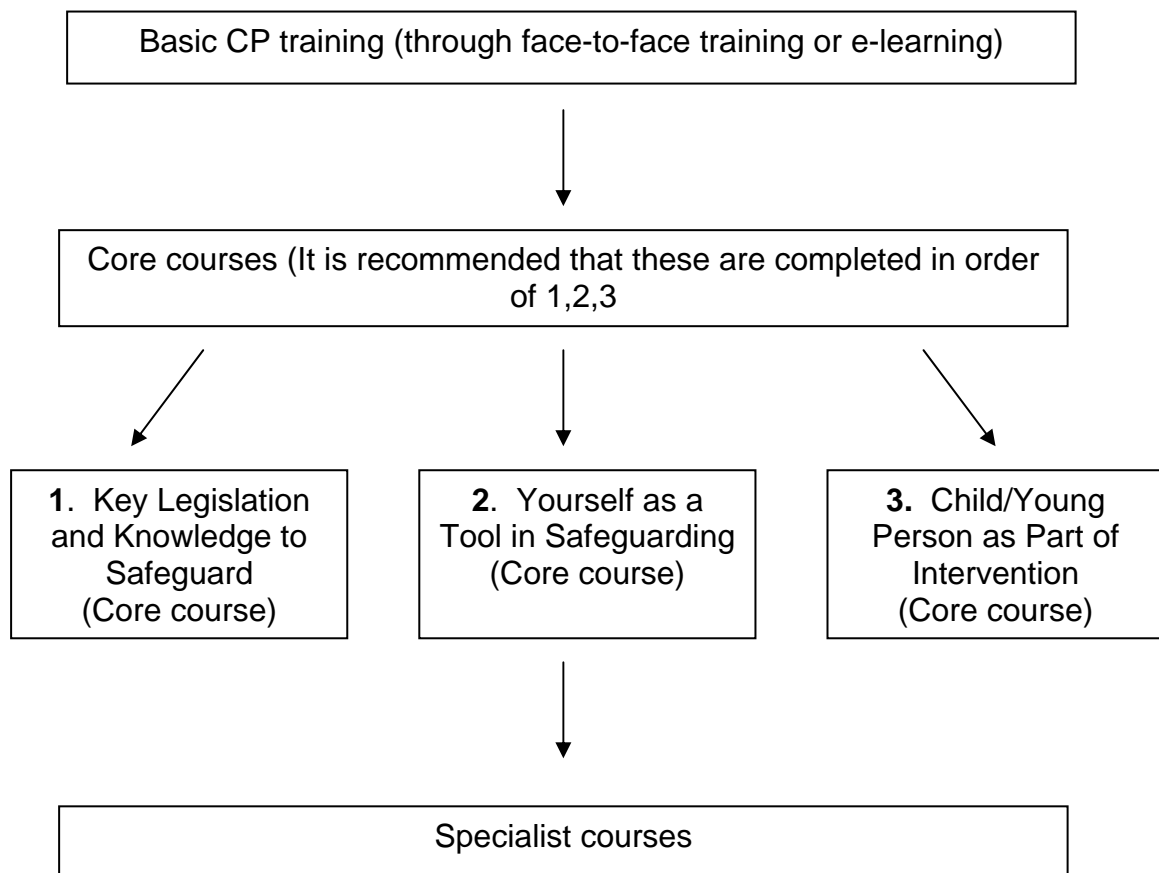
Everyone that may come into contact with children/young people and their families should know of the pre-disposing factors, signs and indicators of child abuse. Individuals should be in a position to exercise professional skill in terms of effective information sharing and the ability to analyse this information. We should have the knowledge and skills to collaborate with other professionals and organisations in order to safeguard the welfare of children and young people. We all have a duty to safeguard and the training is an integral part of our work.

In this year's training programme we have increased the amount of Child Protection Awareness and Recognition and Referral courses. Over the year we will be running specialist workshops/briefings. These sessions will give participants an overview of new and current developments in particular areas. This offers practitioners a chance to explore new ideas, approaches and particular areas of interest.

It is important that practitioners attend the core courses before they can progress to the more specialist courses. The core courses provide practitioners with baseline knowledge that is integral to providing an effective service for children/young people and families.

A flow chart has been provided to help individuals, along with their managers identify a learning path, enabling them to attend all courses that are relevant to their professional development.

RECOMMENDED LEARNING PATHS



Helping you decide which course is right for you

The Barking and Dagenham LSCB courses are open to a very wide range of statutory, voluntary, private and/or independent agencies and organisations, including faith groups. This incorporates those that provide services direct to children and their families, or provide services for adult clients – who may also be parents or carers of dependent children.

Identification of target audiences

To help you find the best match between your learning needs and the LSCB courses, we have identified a 3 level model for identifying target audiences. This is based on the London Safeguarding Children Board 'Competence Matters' Model.

The model that is shown is advocated in 'Working Together' (2006), where it states,

'Training should be available at a number of levels to address the learning needs' of different staff. The purpose of this model is to group practitioners according to the level and nature of their involvement with children and their families.'

Group A

In this group, workers have contact / work with children and young people and with their parents/ carers. They have a responsibility to contribute to safeguarding and promoting the welfare of children in the community but do not necessarily have specific organisational responsibility to intervene in the lives of children and their families.

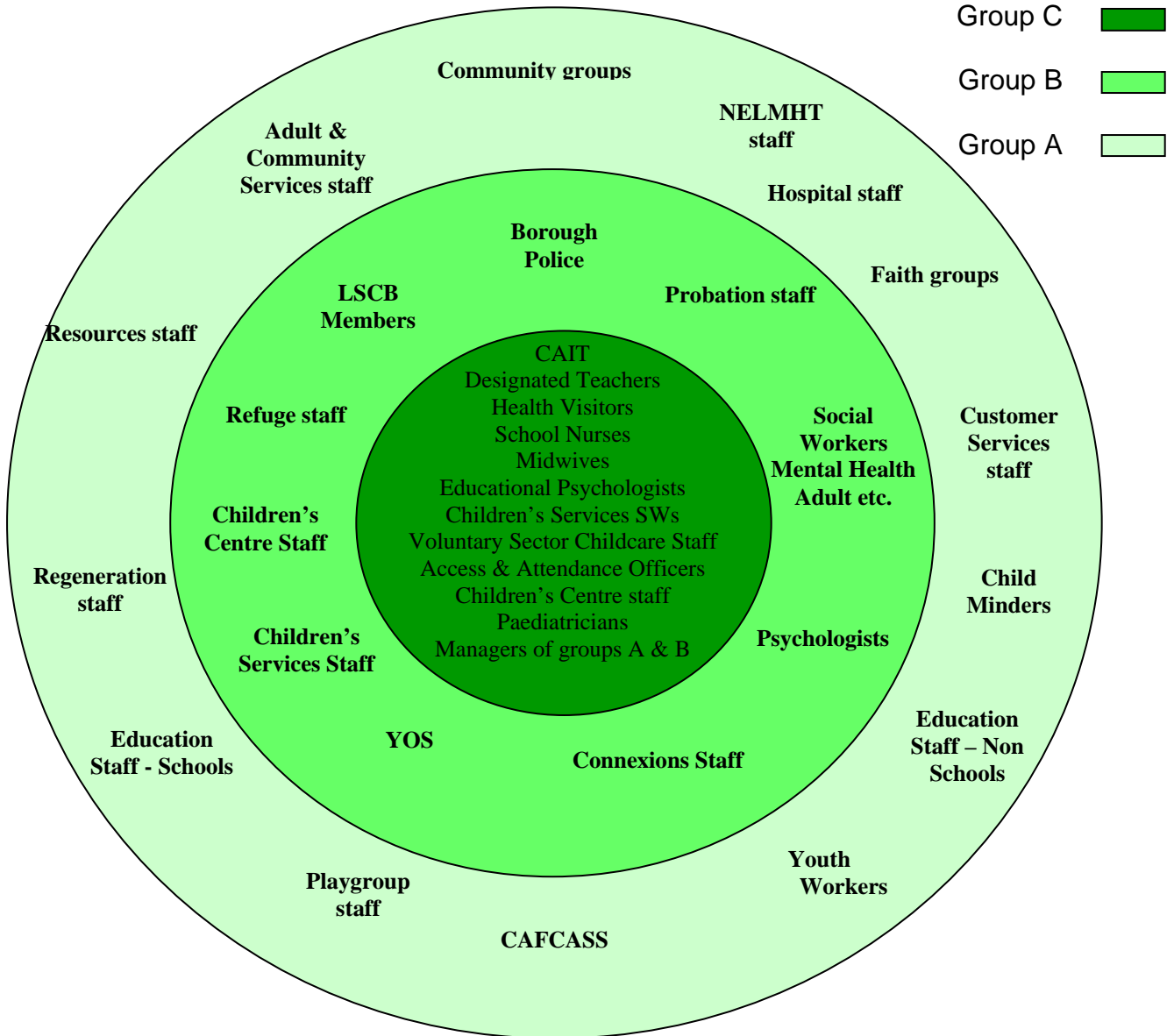
Group B

Group B training is for people who work regularly with children and young people and adults who are parents/carers. They have considerable professional and organisational responsibility for safeguarding and promoting children's well-being. They have to be able to act on child welfare concerns and to contribute appropriately to the safeguarding processes. They require the skills and knowledge to manage effectively the interface between themselves and those from Group A, who may approach them with concerns about a child's welfare, and Group C to whom referrals will be addressed.

Group C

This group of people have particular responsibilities for safeguarding and promoting the welfare of children. People in this group hold particular professional or organisational authority and a substantial degree of personal responsibility and autonomy to act on child welfare concerns. They work extensively within a multi-agency context. They often have responsibility for the work of others.

Competence Matters Model



The post titles shown in this model are not exhaustive and are intended to indicate which types of jobs are targeted for each group. Some agencies will have staff in all groups.

TRAINING PASSPORT

What is the training passport?

The training passport provides the opportunity for delegates in Groups B & C to submit case studies demonstrating that they have implemented the learning from the 3 core courses.

Am I in one of the target groups?

The training passport is aimed at groups B & C. If you are in Group A, then you will not be eligible.

Why should I apply for a Training Passport?

The training passport is a document that is approved and stamped by the LSCB that will act as evidence of your competency to safeguard children.

The passport will count towards Continuous Professional Development. It is also proof of learning that is transferable to other job opportunities.

How do I begin the process?

Discuss your learning needs with your line manager and record your agreed objectives for your personal development plan. It is essential that you have the support of your manager before you apply for the Training Passport as they will be required to endorse your written submission.

Then you should attend the 3 core courses:

- Key Legislation and Knowledge to Safeguard
- Yourself as a Tool in Safeguarding
- Child/Young Person as Part of Intervention

You can book onto these courses by completing the application form on the web site and sending it to lscb@lbbd.gov.uk. Applications can be sent by post to LSCB Training Administrator, Room 75, Civic Centre, Dagenham, RM10 7BW, but will not be accepted over the phone.

When you apply to attend the first course you should register your interest in the Training Passport. The LSCB Training Administrator will send you the documents for your written submission.

What is the next step?

Once you have attended the 3 courses you should complete two short case studies taken from your practice that demonstrate that you have implemented the learning objectives from the courses.

Your manager should be included in the process, agree the case studies chosen, and endorse your submission.

You have 12 months to submit your case studies after attending the courses.

You send your completed submission to lscb@lbbd.gov.uk (or post to the address given above) for scrutiny and ratification.

A scrutiny Panel will look at your submission and, if you have provided the required evidence, you will receive your stamped Training Passport within 3 weeks of the panel date.

If you are unsuccessful, you will receive feedback and have 3 months to re-submit.

If you have any further questions about the Training Passport please e-mail us at lscb@lbbd.gov.uk or phone on 020 8227 2839/2170

The Safeguarding Children E-Learning Programme

Introduction:

The LSCB Barking & Dagenham is pleased to provide this e-learning course to all the LSCB Partner agencies. The course focuses on children and young people “Staying Safe” as a key element of the Every Child Matters (2006) and its five key outcomes:

- Be Healthy
- Stay Safe
- Enjoy and Achieve
- Make a contribution
- Achieve Economic Wellbeing

What is the e-learning course?

It is a web based electronic learning module.

The e-learning course was designed by Kwango Ltd, a UK training and consulting organisation.

Who is the e-learning course for?

All the children’s workforce in the statutory, voluntary and independent sectors.

All those planning to attend the LSCB safeguarding training courses, but who do not have experience in the safeguarding terminology, and/or practice with children and their families should use the e-learning course.

The e-learning programme provides basic child protection awareness as a preparation for the face to face courses and does not replace them.

What are the aims and learning objectives of the e-learning course?

- Understand signs and symptoms of child abuse
- Be aware of the inquiries and legislation underpinning child protection
- Know what to do if you are worried that a child is being abused
- Develop some useful assessment skills
- Be clear about sharing information with others
- Understand local child protection procedures

How is the e-learning accessed?

Please email lscb@lbbd.gov.uk and you will be provided with a password, and instruction on how to access the web site.

Continuous Professional Development

All delegates who successfully complete the e-learning course will receive a Certificate of completion that counts towards your record of continuous professional development.

Course administration

How do I apply for a course?

In order to apply for one of the LSCB courses you must first complete an application form. All parts of the application must be completed, including cost codes (council staff) and invoice details for external agencies.

Please turn to the end of this brochure and you will find an application form which can be used as a master copy. You can also download a Training Brochure and application form through the intranet (council staff only) or the LSCB website:

<https://www.bardag-lscb.co.uk>

You will need to complete a separate form for each course. This form must have signed approval by a manager.

Please return your completed training application form either by post, e-mail or fax to:

Training department
Room 75, Civic Centre Annex, Dagenham RM10 7BW
Tel: 020 8227 2839/2170, Fax: 020 8227 2304
E-mail: <mailto:lscb@lbbd.gov.uk>

You must have a confirmed place before attending. You will receive an e-mail of confirmation which should be brought with you to the training. If you do not attend on the day, your line manager will be informed and asked to explain your absence.

How much will it cost me?

Unless otherwise stated courses are free of charge to all internal and external practitioners.

Cancellations/Non-Attendance

Courses are expensive to run and we expect booked participants to make every effort to attend. It is important to remember that agencies have contributed money to the training budget to make these courses possible. Places are limited and therefore it is beneficial for all that places are taken to the full capacity.

If you are unable to attend it is your manager's responsibility to ensure that the place is filled by someone else.

Late cancellations, received within less than 5 (working) days notice will incur a charge of £40.00 per day. Failure to attend will also incur a charge. Authorising managers will be sent invoices to recover this cost. No monies will be taken prior to notification.

In exceptional circumstances a training event may need to be cancelled by us. In such an event, we shall let you know about the cancellation as soon as we can.

Attendance

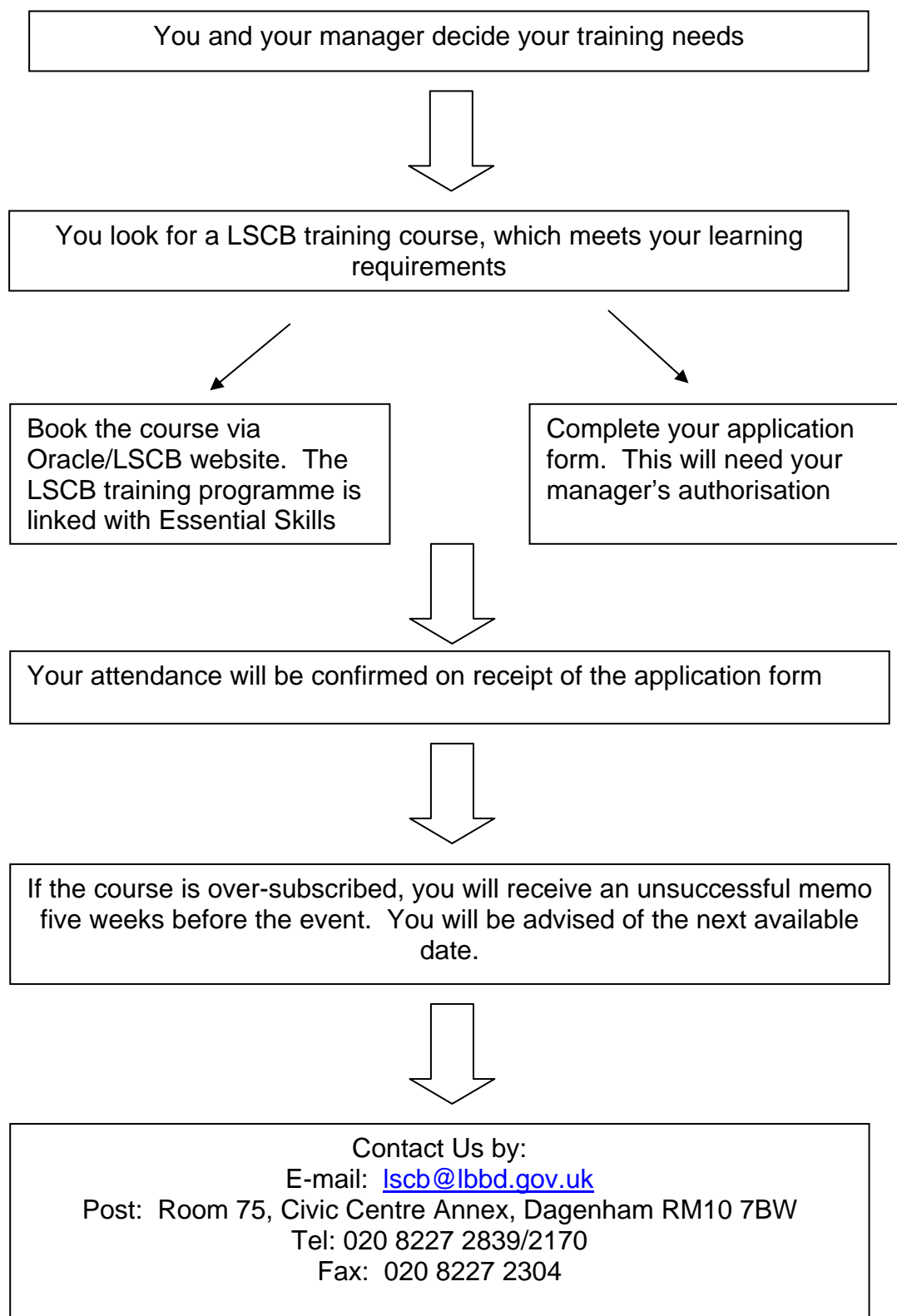
It is the responsibility of the individual agency to prioritise their staff for places on training courses. Advice about suitability can be sought via the LSCB Training Co-ordinator.

Delegates will receive a confirmation e-mail on receipt of application form. A reminder e-mail with course details will be sent one week before the training course.

All courses start promptly, so please allow enough time to ensure you arrive on time. To avoid disruption, we reserve the right to turn away people who arrive after a course has commenced or recommenced following a break.

Certificates of attendance will be issued on completion of the whole course and receipt of the evaluation form. Certificates will not be awarded for partial attendance.

How to Book onto a course



Itinerary of Courses

Basic Safeguarding and Referral Processes

2nd July 2009 26th November 2009
7th September 2009 25th February 2010

Key Legislation and Knowledge to Safeguard

5th May 2009 5th October 2009 18th February 2010
25th June 2009 26th November 2009 15th March 2010
9th July 2009 7th December 2009
24th September 2009 8th January 2010

Child/Young Person as Part of Intervention

21st May 2009 15th October 2009 8th February 2010
12th June 2009 2nd November 2009 30th March 2010
2nd July 2009 10th December 2009
14th September 2009 15th January 2010

Yourself as a Tool in Safeguarding

11th May 2009 22nd October 2009 15th February 2010
2nd June 2009 17th November 2009 5th March 2010
14th July 2009 2nd December 2009
3rd September 2009 19th January 2010

Basic Domestic Violence

21st April 2009 20th October 2009
7th July 2009 20th January 2010

Safeguarding and Domestic Violence

12th May 2009 9th November 2009
15th September 2009 11th February 2010

Forced Marriages and 'so called' Honour Based Violence

30th April 2009
21st October 2009

Effective Information Sharing and Record Keeping

18th May 2009
6th October 2009

Adults and Children who Display Sexual Behaviour

8th June 2009

Parents who Misuse Substances

15th June 2009
11th January 2010

Adult Safeguarding and the links with Child Protection

18th June 2009
25th January 2009

Attendance at Conferences and Core groups

22nd June 2009

18th March 2010

Fabricated/Induced illness and Safeguarding

3rd July 2009

25th November 2009

Identifying Vulnerable Children and Building Resilience

10th July 2009

23rd February 2010

Difficult, Dangerous and Evasive

8th September 2009

15th March 2010

Safer Recruitment

2nd June 2009

28th September 2009

18th January 2010

9th March 2010

Female Genital Mutilation

4th June 2009

17th September 2009

25th February 2010

Manager's Course – Safeguarding Responsibilities

19th October 2009

Cultural and Religious Awareness within South Asian/African Communities

12th October 2009

Safeguarding Asylum Seeking/Refugee/Trafficked Children

17th November 2009

Safeguarding Children with Disabilities

21st January 2010

Serious Case Reviews and Child Deaths

9th September 2009

10th November 2009

4th February 2010

Mental Health and Safeguarding

24th March 2010

TRAINING CALENDAR 2009 - 2010

April 2009		
Date (s)	Course Title	Venue
21 st	Basic Domestic Violence	Westbury Centre
30 th	Forced Marriages and 'Honour Based' Violence	Westbury Centre

May 2009		
Date (s)	Course Title	Venue
5 th	Key Legislation and Knowledge to Safeguard	Westbury Centre
11 th	Yourself as a Tool in Safeguarding	Westbury Centre
12 th	Safeguarding and Domestic Violence	Westbury Centre
18 th	Effective Information Sharing and Record Keeping	Westbury Centre
21 st	Child/Young Person as Part of Intervention	Westbury Centre
21 st	Basic Domestic Violence	Westbury Centre

June 2009		
Date (s)	Course Title	Venue
2 nd	Yourself as a Tool in Safeguarding	Westbury Centre
2 nd	Safer Recruitment	Westbury centre
4 th	Female Genital Mutilation	Westbury Centre
8 th	Adults and Children who Display Sexual Behaviour	Westbury Centre
12 th	Child/Young Person as Part of Intervention	Westbury Centre
15 th	Parents who Misuse Substances	Westbury Centre
18 th	Adult Safeguarding and Links with Child Protection	Westbury Centre
22 nd	Attendance at Conferences and Core Groups	Westbury Centre
25 th	Key Legislation and Knowledge to Safeguard	Westbury Centre

July 2009		
Date (s)	Course Title	Venue
2 nd	Basic Safeguarding and Referral Processes	Westbury Centre
2 nd	Child/Young Person as Part of Intervention	Westbury Centre
3 rd	Fabricated/Induced Illness and Safeguarding	Westbury centre
7 th	Basic Domestic Violence	Westbury Centre
9 th	Key Legislation and Knowledge to Safeguard	Westbury Centre
10 th	Identifying Vulnerable Children and Building Resilience	Westbury Centre
14 th	Yourself as a Tool in Safeguarding	Westbury Centre

September 2009		
Date (s)	Course Title	Venue
3 rd	Yourself as a Tool in Safeguarding	Westbury Centre
8 th	Difficult, Dangerous and Evasive	Westbury Centre
9 th	Serious Case Reviews and Child Deaths	Westbury Centre
14 th	Child/Young Person as Part of Intervention	Westbury Centre
15 th	Safeguarding and Domestic Violence	Westbury Centre
17 th	Female Genital Mutilation	Westbury Centre
24 th	Key Legislation and Knowledge to Safeguard	Westbury Centre
28 th	Safer Recruitment	Westbury centre

October 2009		
Date (s)	Course Title	Venue
5 th	Key Legislation and Knowledge to Safeguard	Westbury Centre
6 th	Effective Information Sharing and Record Keeping	Westbury Centre
12 th	Cultural and Religious Awareness within South Asian/African Communities	Westbury Centre
15 th	Child/Young Person as Part of Intervention	Westbury Centre
19 th	Manager's Course – Safeguarding Responsibilities	Westbury Centre
20 th	Basic Domestic Violence	Westbury Centre
21 st	Forced Marriages and 'Honour Based' Violence	Westbury Centre
22 nd	Yourself as a Tool in Safeguarding	Westbury Centre

November 2009		
Date (s)	Course Title	Venue
2 nd	Child/Young Person as Part of Intervention	Westbury Centre
9 th	Safeguarding and Domestic Violence	Westbury Centre
10 th	Serious Case Reviews and Child Deaths	Westbury Centre
17 th	Yourself as a Tool in Safeguarding	Westbury Centre
17 th	Safeguarding Asylum Seeking/Refugee/Trafficked Children	Westbury centre
25 th	Fabricated/Induced Illness and Safeguarding	Westbury centre
26 th	Basic Safeguarding and Referral Processes	Westbury Centre
26 th	Key Legislation and Knowledge to Safeguard	Westbury Centre

December 2009		
Date (s)	Course Title	Venue
2 nd	Yourself as a Tool in Safeguarding	Westbury Centre
7 th	Key Legislation and Knowledge to Safeguard	Westbury Centre
10 th	Child/Young Person as Part of Intervention	Westbury Centre

January 2010		
Date (s)	Course Title	Venue
8 th	Parents who Misuse Substances	Westbury Centre
11 th	Parents and Children who Substance Misuse	Westbury Centre
15 th	Child/Young Person as Part of Intervention	Westbury Centre
18 th	Safer Recruitment	Westbury centre
19 th	Yourself as a Tool in Safeguarding	Westbury Centre
20 th	Basic Domestic Violence	Westbury Centre
21 st	Safeguarding Children with Disabilities	Westbury Centre
25 th	Adult Safeguarding and Links with Child Protection	Westbury Centre

February 2010		
Date (s)	Course Title	Venue
4 th	Serious Case Reviews and Child Deaths	Westbury Centre
8 th	Child/Young Person as Part of Intervention	Westbury Centre
11 th	Safeguarding and Domestic Violence	Westbury Centre
11 th	Parents and Children who Substance Misuse	Westbury Centre
15 th	Yourself as a Tool in Safeguarding	Westbury Centre
18 th	Key Legislation and Knowledge to Safeguard	Westbury Centre
23 rd	Identifying Vulnerable Children and Building Resilience	Westbury Centre
25 th	Basic Safeguarding and Referral Processes	Westbury Centre
25 th	Female Genital Mutilation	Westbury Centre

March 2010		
Date (s)	Course Title	Venue
5 th	Yourself as a Tool in Safeguarding	Westbury Centre
9 th	Safer Recruitment	Westbury centre
15 th	Key Legislation and Knowledge to Safeguard	Westbury Centre
15 th	Difficult, Dangerous and Evasive	Westbury Centre
18 th	Attendance at Conferences and Core Groups	Westbury Centre
24 th	Mental Health and Safeguarding	Westbury Centre
30 th	Child/Young Person as Part of Intervention	Westbury Centre

Trainer Profiles

to be added

Basic Safeguarding and Referral Processes

Aim of the training:

To raise the participants awareness around basic safeguarding and ensure that all professionals, regardless of their contact with children, should be able to make an appropriate referral.

Learning objectives:

- demonstrate a better understanding of the four categories of abuse
- describe Indicating factors of abuse
- familiarise themselves with the appropriate action to be taken in cases of child protection
- demonstrate an understanding of accountability and responsibility in relation to child protection
- demonstrate the use of referral processes
- comprehend the difference between child protection and safeguarding
- familiarise themselves with how to complete a MARF and CAF
- describe the borough's windscreen process
- demonstrate an understanding of diversity and safeguarding
- demonstrate knowledge of Local Continuum of Needs documents

Trainer/facilitator: Kellie-Ann Fitzgerald

Dates:

2nd July 2009 26th November 2009
7th September 2009 25th February 2009

Venue: Westbury Centre

Time: 9.30am – 4.30pm

Key Legislation and Knowledge to Safeguard

Aim of the training:

The course will cover the key childcare legislation and inform participants on national and local safeguarding policies and procedures. This course also aims to provide a direct learning component of the LSCB Training Passport.

Learning objectives:

- demonstrate an awareness of the LSCB and its remit
- familiarise themselves with a basic knowledge of current legislation
- increase their awareness of national guidance and their own roles & responsibilities
- be able to apply local guidance, policies and procedures within their role in safeguarding, including continuum of needs document
- demonstrate an understanding of the roles of other professionals on safeguarding
- demonstrate an understanding of legislation in regards to safeguarding and diversity

Trainer/facilitator: TBA

Dates:

5 th May 2009	5 th October 2009	18 th February 2010
25 th June 2009	26 th November 2009	15 th March 2010
9 th July 2009	7 th December 2009	
24 th September 2009	8 th January 2010	

Venue: Westbury Centre

Time: 9.30am – 4.30pm

Child/Young Person as Part of Intervention

Aim of the training

The aim of this one-day training event is for participants to develop their knowledge and skills to promote meaningful participation by children and young people in any intervention in their lives. The course will cover the signs and symptoms of abuse and what actions should be taken to safeguard the child. This course also aims to provide a direct learning component of the LSCB Training Passport.

Learning objectives:

- demonstrate knowledge of how to act to safeguard and promote a child's welfare and safeguarding
- describe signs of abuse and understand that they can be subtle and be expressed in play
- demonstrate knowledge of assumptions, values and discrimination and show an understanding of how these can affect access to services for children
- demonstrate an understanding of the impact of diversity in participation
- explain how to develop a rapport and develop respectful trusting relationships with children and carers
- explain how they can give the child the opportunity to participate in decisions affecting them and take their opinions into account
- have confidence to represent actively the child or young persons rights
- explain the different forms and extent of abuse and the impact on the child's development
- enhance their awareness around recognising the young person is at risk and in danger and take action to protect
- demonstrate knowledge of continuum of needs and levels of intervention

Trainer/facilitator: TBA

Dates:

21 st May 2009	15 th October 2009	8 th February 2010
12 th June 2009	2 nd November 2009	30 th March 2010
2 nd July 2009	10 th December 2009	
14 th September 2009	15 th January 2010	

Venue: Westbury Centre

Time: 9.30am – 4.30pm

Yourself as a Tool in Safeguarding

Aim of the training:

This one-day course aims to develop the participant's knowledge, skills and confidence to safeguard children competently using their own professional judgement and objectivity. The course covers conflict resolution, challenging poor practice, self-awareness, professional boundaries and support systems. This course also aims to provide a direct learning component of the LSCB Training Passport.

Learning objectives

- appreciate the effect of witnessing upsetting situations and get support
- understand issues regarding aggression, anger, violence and how to respond to conflict
- know boundaries of personal competence and how to get others involved to support
- make considered judgements about how to act to safeguard and promote a child's welfare
- have the confidence to challenge your own and other practice
- have self awareness and ability to analyse objectively
- use appropriate IT and language skills to effectively observe, record and report
- demonstrate knowledge of continuum of needs thresholds

Trainer/facilitator: TBA

Dates:

11 th May 2009	22 nd October 2009	15 th February 2010
2 nd June 2009	17 th November 2009	5 th March 2010
14 th July 2009	2 nd December 2009	
3 rd September 2009	19 th January 2010	

Venue: Westbury Centre

Time: 9.30am – 4.30pm

Basic Domestic Violence

Aim of the training:

This course aims to provide participants of the knowledge surrounding domestic violence and its affects on those affected by it.

Learning outcomes:

- develop knowledge of the definitions and types of abuse
- demonstrate an understanding of the reasons why individuals remain in abusive relationships
- knowledge of how children and young people may be involved in abusive situations
- demonstrate knowledge of diversity within domestic violence
- demonstrate knowledge of myths and stereotypes surrounding domestic violence
- describe access to local services and the role they play in helping sufferers of abuse
- develop a basic knowledge of risk assessing and safety planning

(please note this course must be booked through Oracle or by emailing allison.buchanan@lbbd.gov.uk.)

Trainer/facilitator: Allison Buchanan

Dates:

21st April 2009

20th October 2009

7th July 2009

20th January 2010

Venue: Westbury Centre

Time: 9.30am – 4.30pm

Safeguarding and Domestic Violence

Aim of the training:

This course aims to raise awareness of the impact of domestic violence on children and families, and understand the benefits of integrated working to address this issue.

Learning Objectives:

- demonstrate an understanding of the links between domestic violence and safeguarding children
- familiarise themselves with the effects on children of living with domestic violence
- describe how to plan safe choices for adult victims and their children living with domestic violence
- enhance their awareness of Identifying, assessing and responding to risk around is domestic violence
- describe the Barnados tool kit
- demonstrate usage of the Barnados tool kit
- describe options available to people affected by domestic violence

Trainer/facilitator: Allison Buchanan

Dates:

12th May 2009 9th November 2009
15th September 2009 11th February 2010

Venue: Westbury Centre

Time: 9.30am – 4.30pm

Forced Marriages and 'Honour Based' Violence

Aim of the training:

This one-day course aims to develop the participant's knowledge, skills and confidence to safeguard children and young people affected by forced marriages and honour based violence.

Learning outcomes:

- comprehend the difference between forced marriages and arranged marriages
- explain the different types of actions that constitute as honour based violence
- familiarise themselves with the key motives identified behind forced marriages and honour based violence
- develop knowledge of the cultural roots of forced marriages
- increase their knowledge of the law surrounding marriage, specifically the Forced Marriage Civil protection Act 2007
- demonstrate an awareness of the effects of forced marriages on children/young people and their families
- enhance their awareness on procedures to be followed and making referrals
- demonstrate an understanding of diversity within forced marriages and so called honour based violence
- feel empowered in terms of working with children/young people affected by forced marriages and so called honour based violence

Trainer/facilitator: Arvinder Lall

Dates:

30th April 2009

21st October 2009

Venue: Westbury Centre

Time: 9.30am – 4.30pm

Effective Information Sharing and Record Keeping

Aim of the training:

This course aims increase the knowledge of participants in regards to the benefits and need for record keeping and information sharing

Learning objectives

- demonstrate knowledge of local policies and procedures in regards to effective communication and information sharing
- show an understanding of the reason for recording
- demonstrate knowledge of what to record and why
- explain the common pitfalls in recording and strategies for dealing with these pitfalls
- familiarise themselves with how to share information and data protection
- demonstrate their awareness of information sharing on a multi-agency basis
- familiarise themselves with Contact Point
- enhance their awareness of good practice through reflection analyzing, planning and working in partnership
- demonstrate an awareness of applying evidence based practice
- feel empowered in terms of working with other organizations in regards to information sharing and record keeping

Trainer/facilitator: TBA

Dates:

18th May 2009

6th October 2009

Venue: Westbury Centre

Time: 9.30am – 4.30pm

Adults and Children who Display Sexual Behaviour

Aim of the training:

This course aims to increase the knowledge of participants in regard to adults, young people and children who sexually harm children. The course aims to develop participants understanding of the complex issues pertaining to causation, characteristics and triggers associated with sexually harmful behaviour. The course also aims to provide participants the opportunity to reflect on developing effective interventions.

Learning Objectives:

- demonstrate an understanding of definitions of harmful and concerning sexual behaviour
- demonstrate knowledge in regard to the prevalence and characteristics of people engaged in this behaviour
- demonstrate an understanding of the causation of such behaviour and appropriate intervention
- reflect on their own values and beliefs in relation to what constitutes sexual harmful behaviour
- demonstrate an understanding of the legislative framework for an intervention with children/young people and adults engaging in such behaviours
- reflect on appropriate models of engaging alleged perpetrators using motivational interviewing

Trainer/facilitator: TBA

Dates: 8th June 2009

Venue: Westbury Centre

Time: 9.30am – 4.30pm

Parents who Misuse Substances

Aim of the training:

This course aims to introduce practitioners to and raise awareness about the different types of substance misuse and the impact this has on children and families and the hidden harm agenda.

Learning outcomes:

- explain the different types of substance misuse
- develop an understanding of the differences of the impact of substance misuse on children and their families
- develop an understanding of the key indicators of a persons vulnerability to substance misuse
- explain the barriers of working with young people and parents who misuse substances
- demonstrate knowledge of what constitutes as harm and how to reduce harm
- acquaint themselves with techniques for engaging with parents and young people that misuse
- feel empowered in terms of identifying and analysing risks
- understand how to refer a young person or adult into drug or alcohol treatment
- knowledge of the hidden harm agenda

Trainer/facilitator: DAAT Team

Dates: 15th June 2009
11th January 2010

Venue: Westbury Centre

Time: 9.30am – 4.30pm

Adult Safeguarding and the Links to Child Protection

Aim of the training:

To raise the participants awareness around adult abuse and duties to safeguard

Learning Objectives:

- demonstrate an understanding of adult abuse
- describe signs and symptoms of abuse
- familiarise themselves reporting forms and effective record keeping
- demonstrate an understanding of the links between adult and child abuse
- demonstrate the use of referral processes
- comprehend the difference between child protection and safeguarding
- familiarise themselves with abuse in diverse communities, including honour based violence and forced marriages

Trainer/facilitator: Adult and Community Services

Dates: 18th June 2009
25th January 2010

Venue: Westbury Centre

Time: 9.30am – 4.30pm

Attendance at Conferences and Core Groups

Aim of the training:

The aim of this course is for participants to develop understanding and skills in order to maximise the effectiveness of their role within core groups.

Learning Objectives:

- identify the core skills and competences needed to effectively take part in a core group
- demonstrate in-depth knowledge about the tasks and key areas of responsibility undertaken by core group members
- show an understanding of how core groups develop and monitor effective protection plans
- demonstrate knowledge about the statutory legal framework and guidance underpinning key worker role
- develop awareness of the dynamics that can develop in groups and the important place of self-awareness and critical reflection skills

Trainer/facilitator: Alison Crowe

Dates: 22nd June 2009

18th March 2010

Venue: Westbury Centre

Time: 9.30am – 4.30pm

Fabricated/Induced Illness and Safeguarding

Aim of the training:

This course aims to introduce practitioners to and raise awareness about fabricated illness, alert professionals to the possibility of fabricated illness, raise awareness of roles and responsibilities in relation to safeguarding children where fabricated illness is suspected.

Learning outcomes:

- demonstrate an understanding of historical background to fabricated induced illness, current legislation and guidance
- demonstrate awareness of controversies associated with fabricated induced illness.
- describe the indicators, dynamics and dangers associated with FII.
- demonstrate an understanding of the roles and responsibilities of professionals in following up concerns about FII, and been able to explore opportunities for more effective working and overcoming barriers
- demonstrate an understanding issues of confidentiality and information sharing which present particular challenges in FII assessment and planning
- to identify and build on areas of existing good practice, and consider any difficulties posed by current practice and procedure
- develop knowledge of mental health and its link to fabricated illness
- demonstrate how this incorporates into Continuum of Needs Services thresholds and intervention process

Trainer/facilitator: TBA

Dates: 3rd July 2009

25th November 2009

Venue: Westbury Centre

Time: 9.30am – 4.30pm

Identifying Vulnerable Children and Building Resilience

Aim of the training:

This course aims to build the knowledge and skills of participants in relation to identifying vulnerable children/young people and working effectively to ensure the safety and well being of these children/young people

Learning outcomes:

- explain the contributing factors that define vulnerability and resilience
- demonstrate awareness of factors that make children/young people vulnerable and/or resilient
- gain knowledge and skills in identifying and analysing vulnerability and resilience in children
- gain knowledge and skills in effectively intervening to reduce vulnerability and promote resilience
- comprehend the link between mental health and vulnerability
- demonstrate an understanding and appreciation of multi-agency working
- explain the Continuum of Needs thresholds in relation to the above

Trainer/facilitator: TBA

Dates: 10th July 2009

23rd February 2010

Venue: Westbury Centre

Time: 9.30am – 4.30pm

Difficult, Dangerous or Evasive

Aim of the training: This training promotes the need for effective and effective intervention with families who professionals may find difficult to deal with.

Learning Objectives:

- develop an understanding of the organisational context of work which can help or hinder staff support in challenging situations
- explore how our own value base can often fragment when faced with threatening situations
- comprehend the difference between 'dangerous' and 'difficult'
- increase their awareness of self care and the ability to utilise support systems as a means of survival in hostile conditions

Trainer/facilitator: Reconstruct

Dates: 8th September 2009
15th March 2010

Venue: Westbury Centre

Time: 9.30am – 4.30pm

Safer Recruitment

Aim of the training:

This course is aimed at managers who are responsible for the recruiting of staff. It will give participants the knowledge to make safer choices when recruiting staff

Learning Objectives:

- be able to identify key features of staff recruitment that help deter or prevent the appointment of unsuitable people
- be able to consider policies and practices that minimise opportunities for abuse or ensure its prompt reporting
- an ability to review their own and their organisations' policies and practices in recruitment with a view to making them safer

Trainer/facilitator: TBA

Dates: 2nd June 2009 18th January 2010
 28th September 2009 9th March 2010

Venue: Westbury Centre

Time: 9.30am – 4.30pm

Female Genital Mutilation (FGM)

Aim of the training:

This course aims to provide the opportunity for participants to develop their awareness of the context of female genital mutilation and its emotional impact on professionals. This one-day course also aims to assist participants to recognise the indicators and what actions they should take to prevent and intervene where they suspect that female genital mutilation is an issue.

Learning Objectives:

- demonstrate an awareness of female genital mutilation
- develop an understanding of the cultural, religious and legal context
- develop competence in recognising and taking action to prevent FGM
- feel empowered to make appropriate referrals of those affected by FGM
- demonstrate an understanding of the law in regards to FGM
- describe local protocols in regards to FGM
- show an understanding of local services

Trainer/facilitator: Jennifer Bourne

Dates: 4th June 2009

25th February 2010

17th September 2009

Venue: Westbury Centre

Time: 9.30am – 4.30pm

Managers' Course – Safeguarding Responsibilities

Aim of the training:

This course aims to provide managers with the skills to ensure that staff performance is in line with best practicing standards

Learning Objectives:

- explain the importance of evaluating performance
- demonstrate an understanding of the core competencies and expectations
- demonstrate an ability to apply the appraisal system
- develop knowledge of recruitment and selection
- describe development/use of supervision with respect to safeguarding
- demonstrate an understanding of case management and planning in regards to safeguarding
- familiarise themselves with service user involvement
- explain where appraisal training linked to safeguarding
- demonstrate an understanding of looking at their organisations. (learning sets)

Trainer/facilitator: TBA

Dates: 19th October 2009

Venue: Westbury Centre

Time: 9.30am – 4.30pm

Cultural and Religious Awareness within the South Asian/African Communities

Aim of the training:

This course aims to increase the knowledge of participants in regards to religious and cultural practices within the South Asian/African communities. It will increase the knowledge of participants around Islam, Hinduism and Sikhism and the impact of religious and cultural practices within safeguarding

Learning Objectives:

- an overview of Islam, Hinduism and Sikhism
- an understanding of cultural practices
- an understanding of family structure on child development

Trainer/facilitator: Arvinder Lall/Victoria Climibe foundation

Dates: 12th October 2009

Venue: Westbury Centre

Time: 9.30am -4.30pm

Safeguarding Asylum Seeking/Refugee/Trafficked Children

Aim of the training:

This course aims to increase the knowledge of participants in regards to asylum seeking/refugee children and our roles and responsibilities in relation to safeguarding

Learning Objectives:

- explain the different definitions
- demonstrate an awareness of legislation pertaining to asylum seeking children
- familiarise themselves with how the asylum seeking route fits in with social care systems
- describe the means and processes for resolving age disputes
- develop awareness of and skills in assessing vulnerabilities including need for protection and planning interventions of support including building resilience
- feel empowered to apply the assessment framework to asylum seeking/trafficked children and identify potential barriers and mechanisms of overcoming them
- demonstrate skills in understanding the narratives of asylum seeking/trafficked children
- demonstrate skills in monitoring outcomes
- describe the impact of trauma and considering models of work to address these including the role of specialist services
- develop an awareness of research findings and implications for practice
- demonstrate an awareness of rights when they turn 16 and 17
- link to local services

Trainer/facilitator: TBA

Dates: 17th November 2009

Venue: Westbury Centre

Time: 9.30am – 4.30pm

Safeguarding Children with Disabilities

Aim of the training:

The course allows participants to develop knowledge and skills in order to provide effective multi agency approach in meeting safeguarding needs of children with disabilities

Learning outcomes:

- explain the need to develop common language for better communication between professionals and with children who have disabilities.
- demonstrate an understanding of attitudes that minimise / deny altered behaviours in children with disabilities
- familiarise themselves with models that inform understanding of disability
- increase their awareness of research findings pertaining to the maltreatment of children with disabilities
- demonstrate knowledge and skills in applying an interagency assessment framework when assessing the needs of children with disabilities
- show an understanding of local developments

Trainer/facilitator: TBA

Dates: 21st January 2010

Venue: Westbury Centre

Time: 9.30am – 4.30pm

Serious Case Reviews and Child Deaths

Aim of the training:

This course aims to develop the participant's knowledge in regards to Serious Case Reviews and the Impact of Child deaths on policies and procedures.

Learning objectives

- demonstrate an understanding of why SCRs take place
- familiarise themselves with legislation in regards to child deaths and SCRs
- increase their awareness around local SCRs and the lessons learnt
- explain how they can implement the lessons learnt within their own practice and their own organisations
- develop knowledge in regards to government recommendations and safeguarding practice
- explain the impact of diversity on SCRs and child deaths

Trainer/facilitator: TBA

Dates: 9th September 2009
10th November 2009
4th February 2010

Venue: Westbury Centre

Time: 9.30am – 4.30pm

Mental Health and Safeguarding

Aim of the training:

This course aims to provide staff with information that will raise their awareness, understanding and increase their knowledge with regards to how Mental Health problems/issues may impact on the capacity to parent.

Learning outcomes:

- demonstrate a basic understanding of key mental health diagnoses
- reflect on current research
- identify risk to children whose parents have mental health issues
- demonstrate knowledge of the issues pertaining to Children/Young People where mental health is an issue
- examine thresholds relating to risk
- explore the positive as well as problematic areas of practice
- describe local procedures and services

Trainer/facilitator: TBA

Dates: 24th March 2010

Venue: Westbury Centre

Time: 9.30am – 4.30pm

Local Safeguarding Children Board Application Form

Course Title	
Course Date(s) /Times	

Applicant Details: (please complete in block capitals if handwritten)

Name	
Job Title	
Email	
Work Location	
Work telephone number	

Organisation: (Please choose a sector)

Safeguarding and Rights	<input type="checkbox"/>	PCT	<input type="checkbox"/>	Resources	<input type="checkbox"/>
Policy and Trust	<input type="checkbox"/>	BHRT	<input type="checkbox"/>	Connexions	<input type="checkbox"/>
Commissioning		Mental Health (children)	<input type="checkbox"/>	Probation	<input type="checkbox"/>
Integrated Family Services	<input type="checkbox"/>	Mental Health (Adult)	<input type="checkbox"/>	Police (borough)	<input type="checkbox"/>
Quality and School Improvement	<input type="checkbox"/>	Adult and Community (YOT)	<input type="checkbox"/>	Police (CAIT)	<input type="checkbox"/>
Learning and Skills	<input type="checkbox"/>	Adult and Community (other)	<input type="checkbox"/>	Police (CSU)	<input type="checkbox"/>
Employment	<input type="checkbox"/>	Customer Services	<input type="checkbox"/>	CAFCASS	<input type="checkbox"/>
Education (schools)	<input type="checkbox"/>	Regeneration (housing)	<input type="checkbox"/>	Voluntary Sector	<input type="checkbox"/>
School Improvement Service	<input type="checkbox"/>	Regeneration (other)	<input type="checkbox"/>	Faith Forum	<input type="checkbox"/>
				Other and Private	<input type="checkbox"/>

Declaration:

1. I confirm I have read the attendance criteria and learning outcomes for this course and believe that I will significantly benefit from this learning
2. I will take all necessary steps to ensure that the learning outcomes are reinforced in the workplace.
3. I agree to provide the Local Safeguarding Children Board with post course feedback on request ,both in relation to the course itself and subsequent workforce development
4. I understand that places are valuable, and if I am unable to attend, and do not give at least 5 working days notice my department will be charged a £40 non -attendance fee.
5. I understand that my details will be securely and confidentially retained by the Local Safeguarding Children Board for statistical and information purposes only.

SIGNATURE:

DATE:

FOR MONITORING PURPOSES ONLY:

Do you consider yourself to have a disability? Yes: No:
 GENDER: F M
 Are you a Borough Resident? Y N
 AGE: 16-25 26-35 36-45 Over 45

ETHNIC ORIGIN:

Please state how you would define yourself by ticking the appropriate box.

WHITE		MIXED	
British: <input type="checkbox"/>		White & Black Caribbean	<input type="checkbox"/>
Irish: <input type="checkbox"/>		White & Black African	<input type="checkbox"/>
Traveller of Irish Heritage: <input type="checkbox"/>		White and Asian	<input type="checkbox"/>
Other <input type="checkbox"/>		Other mixed	<input type="checkbox"/>
ASIAN/ASIAN BRITISH		BLACK/BLACK BRITISH	
Indian <input type="checkbox"/>		Caribbean	<input type="checkbox"/>
Pakistani <input type="checkbox"/>		African	<input type="checkbox"/>
Bangladeshi <input type="checkbox"/>		Other	<input type="checkbox"/>
Other <input type="checkbox"/>			
CHINESE	<input type="checkbox"/>	OTHER BACKGROUND	<input type="checkbox"/>

PLEASE ASK YOUR AUTHORISING MANGER TO COMPLETE ALL DETAILS BELOW

Name:	
Job Title	
Contact Address	
Phone Number (s)	
Email	

PLEASE NOTE THAT APPLICATIONS WILL NOT BE PROCESSED UNLESS THIS SECTION IS COMPLETED

Invoice/payment details

All LSCB courses are free at point of entry; however departments will be charged a £40 non attendance charge, if 5 working days notice is not given.

Organisation/Agency	
Address for invoice (external)	
Cost Code (internal only)	

Managers Declaration

1. I confirm that I have read the attendance criteria and learning outcomes for this course and believe that the applicant will significantly benefit from this learning.
2. I authorise this applicant to attend this course and agree that I will take all necessary steps to ensure that the learning outcomes are reinforced in the workforce.
3. I agree to pay the £40 non-attendance if the applicant does not attend the training course without giving at least 5 working days notice.
4. I agree to provide the Local Safeguarding Children Board with access to my agency for the purpose of gaining post course feedback from the applicant and managers responsibility for subsequent workforce development.
5. I will take responsibly for dealing with any incidents or issues related to this application and course on behalf of my agency.

SIGNATURE:

DATE: